

LEAF PRODUCT FAMILY



Leaf
our science *your art*

Extreme Flexibility to Capture your Imagination

Leaf AFi-II and Leaf Aptus-II

Light speeds through the universe. When your work and your passion converge, you can capture the light to create eternal moments. That's when you need the most advanced science between you and your subject. With the extraordinary technology and integrated design of the Leaf AFi-II medium-format digital camera system and the Leaf Aptus-II digital camera back, your tools move as quickly as you need them to, so that you can push your art as far as your imagination.

The Leaf AFi-II system integrates the best materials and technology to deliver a unique experience in digital photography: Best-of-class German lenses; Easy-to-use controls on a rugged, ergonomically designed body housing some of the industry's most revolutionary features; the widest, most versatile sensor on the market and integrated Leaf Capture workflow software. All these elements were designed together to make the Leaf AFi-II the most advanced medium-format digital camera system in the world.



As Boundless as Your Imagination

At 56mm, the True Wide Frame sensor in the Leaf AFi-II 10 and Leaf Aptus-II 10 is the world's widest medium-format sensor. An unsurpassed dynamic range, brilliant 16-bit color files up to 345MB and Leaf Verto and SensorFlex technologies make it the most flexible sensor in the world.

Simply turn the Verto sensor rotation dial and you're shooting with the full 56mm in portrait orientation. With Leaf SensorFlex technology you can use all 9,288 x 6,000 pixels, or select a choice of formats that uses only part of the sensor for even greater speed and the file size you want for your job.

Restore Wide Angle Lenses to their Full Width



Larger Image Capture

The Leaf True Wide Frame sensor is the only 56mm wide sensor in any medium-format camera. Leaf, working closely with our sensor manufacturer, designed and developed the new, exclusive 56x36mm sensor. It was conceived and built to match the full 56mm wide frame that medium-format cameras were designed with— something that has not been achieved since film cameras.

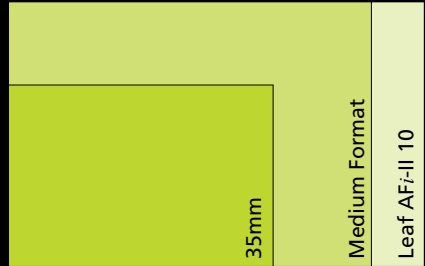


Image Quality

Preserve the most delicate highlights and distinguish details in deep shadows.


16-bit color, an unsurpassed 12-stop dynamic range, up to 56 megapixel resolution working in harmony with high-resolution optics brings out natural skin tones, subtle textures and accurate color reproduction.

Unparalleled Performance for Exacting Demands

The Leaf AFi-II is designed for ultra-high-speed shooting – with full Leaf resolution and image quality. The camera takes advantage of the latest in CompactFlash card technology, writing to the memory card using UDMA speeds. RAW images can be saved as lossless compressed files, enabling you to shoot nearly twice the number of photos per CF card. When tethered, the camera sends images directly to the computer via a fast FireWire 800 connection.

Unlimited Control

Leaf's advanced design puts the settings you need at your fingertips. The Leaf AFi-II and Aptus-II now come with a greatly improved 6x7cm touch screen. Employing the latest in LCD touch screen technology, the new Leaf touch screen is brighter and has higher contrast, allowing you to work intuitively both in the studio and on location.

A dramatic sky at sunset or sunrise, with a road in the foreground. The sun is low on the horizon, creating a golden glow and long shadows. The clouds are dark and textured, with the sun's rays breaking through. The road in the foreground is dark and slightly blurred, suggesting motion.

“With the Leaf AFi, I can travel light and send the results to the client at the end of the day. For me, the most important thing is delivering on my promise to my client, so getting the final results, as I imagined them, and on time is essential.”

René Staud, Germany



Leaf AFi-II medium-format digital camera system

Revolutionary Features. Unmatched Flexibility.

The Leaf AFi-II system is the model for ergonomic handling. The imaging module, interchangeable viewfinder, display screens, handgrip positions and sensor orientation adjust to suit any shooting style. The bright LCD touch screen tilts up to 90° for easy viewing from nearly any angle both indoors and out. These are just a few of the innovative features that make the Leaf AFi-II the most flexible camera in the world.



Ease of use

At Leaf we understand that every photographer sees the world differently. Choose any of the Leaf AFi-II camera systems to meet your unique needs. From full automatic to fine control and advanced features, easy-to-use controls enable quick changes and verification of settings. Within minutes of picking up the Leaf AFi-II, you'll be up and shooting.



Quick-change orientation

Change from landscape to portrait orientation with a turn of the Leaf Verto internal sensor rotation dial. Keep your eye on your subject while the icons in the viewfinder change orientation as the hermetically sealed sensor locks in place.



Sensor flexibility

With Leaf SensorFlex technology you can crop on the fly to standard pre-set formats before you shoot to get the dimensions, file size and transfer rates that are best suited to your work.



Ergonomic design

The adjustable handgrip, balanced center of gravity and easily accessible controls make the Leaf AFI-II comfortable to hold and easy to use.



Tilting LCD touch screen

Only Leaf offers a large 6x7cm (3.5") touch screen display. The Leaf AFI-II LCD image display and touch screen controls are even more accessible now with up to 90° adjustable tilt. Change the angle of the display to easily adjust settings, perform file management tasks.



Tethered shooting

Check your shots and their histograms directly on the LCD screen, without looking back and forth at the computer.



Large, brighter touch screen

The LCD touch screen is brighter with higher contrast for great visibility under all kinds of challenging lighting conditions, both indoors and out.



Three viewfinder options

Reposition the viewfinder to make any shoot comfortable: use the 90°, 45° and waist level viewfinders and forget about tripod adjustments. The 45° and 90° viewfinders can be mounted perpendicular to the lens in both directions. All viewfinders enable full functionality, including built-in light metering and information display. The bright, internal LCD on the viewfinder offers a full display of the camera's essential settings.

Histogram

Easily check brightness levels in a histogram that can be viewed on the LCD touch screen, hand grip display and with Leaf Capture software on a Mac or PC.

Focus trap

Set the camera to shoot automatically when your subject reaches a specific focus distance. Capture your subject at just the right moment, using autofocus to eliminate the guesswork.

Focus bracketing

Shoot a series with slight focus adjustments at a set interval: the Leaf AFi-II Focus bracketing function automatically adjusts the plane of focus for each shot. You can use third-party focus stacking software to combine the planes of focus into a single file in sharp focus across the entire image.

User button

Simple to program for a variety of functions, the user button is conveniently located on the side of the imaging module for easy reach while shooting portable.



Leaf Capture Remote for Apple iPhone/iPod

Using the Leaf Capture Remote application, you, your client or an art director can view your shots live on an Apple iPhone or iPod Touch while you shoot.



Open to third-party applications

View, manipulate and process Leaf RAW files with Adobe Photoshop CS3, Bridge and Photoshop Lightroom, Irident Digital Raw Developer, Silkypix and Bibble. Leaf RAW files are natively supported by the Apple Mac OS/X allowing for full Leaf RAW support in Aperture, Finder thumbnails, Coverflow, iPhoto as well as many other applications.

Compatibility

Together, the Leaf Afi-II imaging module and Leaf Aptus-II digital camera back are compatible with over 80 large- and medium-format cameras.




Best-of-class German Optics

Part of the Leaf Afi-II integrated system design includes high-resolution, German-built PQ and PQS autofocus and manual focus lenses. Best-of-class optics by Zeiss and Schneider-Kreuznach include a range of lenses with Rollei-developed Direct Drive technology, microcomputer-controlled, motor-driven diaphragms with hand-stamped, ultra-thin carbon fiber leaf shutters that deliver fast flash synchronization up to 1/1000 second.



Leaf AFi-II Lenses

| | Focal Length | Aperture Range | Filter Size | Focusing Range | Weight |
|--|--------------|----------------|-------------------------------------|----------------|---------|
| 40 mm f/3.5 HFT PQ Schneider Super-Angulon | 40mm | 3.5-22 | M 77 x 0.75 | ∞ – 0.4 m | 750 gr |
| 50 mm f/2.8 HFT PQS Schneider AFD Super-Angulon | 50 mm | 2.8 – 22 | M 95 x 1 | ∞ – 0.6 m | 1500 gr |
| 80 mm f/2.8 HFT PQS Schneider AFD Xenotar | 80 mm | 2.8 – 22 | Size VI Rollei bayonet | ∞ – 0.8 m | 520 gr |
| 90 mm f/4 HFT PQS Schneider MF Apo-Symmar | 90 mm | 4 – 32 | M 95 x 1 | ∞ – 0.4 m | 860 gr |
| 110mm f/2 HFT PQ Zeiss MF Planar | 110 mm | 2 – 16 | M 95 x 1 (filter) | ∞ – 0.8 m | 1295 gr |
| 120 mm MF-f/4 HFT PQS MF Makro Apogon | 120 mm | 4 – 32 | Size VI Rollei bayonet | ∞ – 0.8 m | 812 gr |
| 150 mm f/4 HFT PQS Schneider AFD Tele-Xenar | 150 mm | 4 – 22 | Size VI Rollei bayonet | ∞ – 1.4 m | 890 gr |
| 60-140 mm f/4.6 HFT PQS Schneider AFD Variogon | 60-140 mm | 4.6 – 32 | Filter adapter M 122 x 1 | ∞ – 0.7 m | 2400 gr |
| 180 mm f/2.8 HFT PQ Schneider AFD Tele-Xenar | 180 mm | 2.8 – 22 | M 95 x 1 (filter) 104 bay (lens) | ∞ – 1.8 m | 1480 gr |
| 250 mm f/5.6 HFT PQS Schneider MF Sonnar | 250 mm | 5.6 – 45 | Size VI Rollei bayonet | ∞ – 2.5 m | 1150 gr |



“The Leaf AFi camera is wonderfully balanced (and I mean wonderfully), so I love to use it handheld for portrait work and for location work.”

- Frank Doorhof, The Netherlands



Leaf Aptus-II Digital Camera Backs

The Leader in Speed and Image Quality

The Leaf Aptus-II series of digital backs offers professional photographers the speed, image quality and flexibility to push their work beyond expectations.



Larger digital sensors

The all new Leaf Aptus-II series includes a top of the line offering with the only True Wide Frame sensor. Capture what was previously impossible, with a revolutionary, larger digital sensor that achieves True Wide Frame shooting. The full-width 56x36mm sensor provides higher resolution (56MP) and allows for full-width imaging.

Highest speed

Capture speeds as fast as 1 frame per second, for the freedom and flexibility to realize your creative vision.

- Fastest image transfer speed, using the latest FireWire 800 technologies
- Fastest Read/Write speeds taking advantage of the newest CompactFlash (CF) card technology

Uncompromising image quality

Film-like quality that is superior to any capture device available in the industry, regardless of resolution.

- Unique color filters ensure consistent and accurate color reproduction
- Large, specially designed sensor with unsurpassed 12 f-stop dynamic range provides unmatched detail, richness and color, low noise, and striking highlights
- Broad ISO: from 50 to 800

“The Leaf is tough and reliable, essential when shooting as many as 100 photographs that make up my images. I am delighted with my Leaf back.”

- Bill Thompson, USA

Flexibility: Shoot your best in any situation

Take advantage of a range of features that enable you to shoot anywhere.

- A new brighter and higher contrast LCD touch screen, for checking your shots under all kinds of challenging lighting conditions, both indoors and out
- Maximum portability with a range of storage options: CF card, FireWire disk, computer hard disk
- Compatible with medium- and large-format cameras: use wide-angle lenses and shift & tilt movements
- Compatible with Adobe Photoshop Lightroom, and Apple Aperture as well as other leading software applications for processing Leaf uncompressed RAW files

Complete control: Functionality and portability

A wide range of functions are available directly on the camera back, including:

- Create and name alternate directories for file storage
- Annotate individual files with text entered using an on-screen keyboard
- Image-viewing options: by list, by a range of thumbnail sizes
- Multiple selection of images: perform actions on the entire selection
- Portable file-management option: name images/folders and predefine settings per shoot
- View histogram representation

Enhanced productivity: Faster shoot-to-delivery

Adjust and control images while you shoot, using the intuitive display to manipulate RAW images in a range of thumbnail sizes.

- The image automatically orients itself to the camera's rotation
- The handy loupe tool provides immediate access to focus control during the shoot
- Enjoy wireless connectivity via Bluetooth, or view the images on a portable HP iPAQ
- Use the lossless 16-bit file compression to speed up file handling without loss of image quality

Leaf Capture workflow software

Designed expressly to maximize productivity with Leaf AFI-II digital cameras and Leaf Aptus-II camera backs, the latest Leaf Capture software is the professional photographer's tool to quickly and easily move from image capture to print.

New and Improved Features

With input from leading photographers for ongoing improvements, Leaf has added the features required to quickly compose your images, while improving the overall package. The intuitive user interface guides you through the image capture workflow. Use it to check and perfect your images while you shoot, including live video preview; Ideal for high-volume productions on tight deadlines, such as catalogs and fashion shoots. Leaf Capture is the fastest tethered workflow application for commercial shooting. Adjust images on a Mac or PC to match the creative demands of portrait, fashion, and commercial photography.

Quickly Verify Focus

You can quickly check focus while shooting your images by using Leaf Capture's Loupe Tool, viewing an area of the image or any thumbnail at a scale of 100%. With the Detail Window permanently open in 100% view you can center on a spot while shooting is in progress.

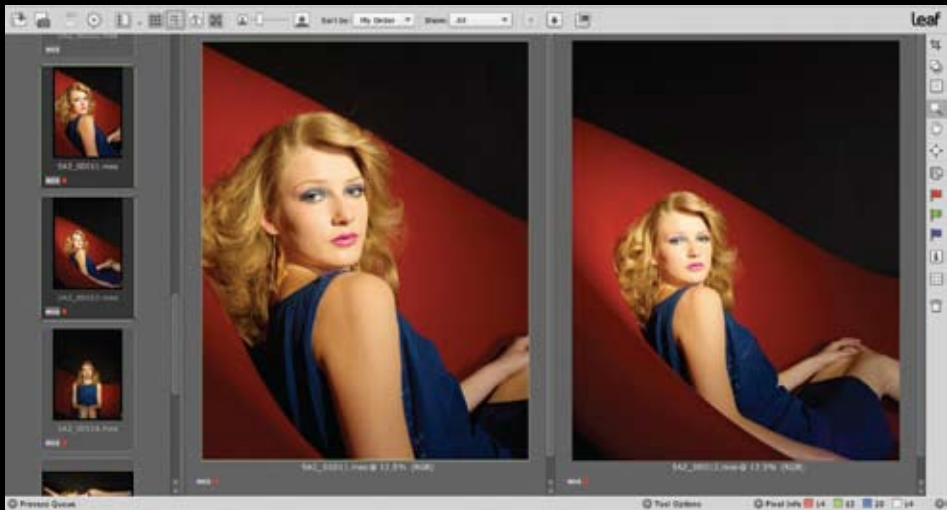
Manage With Greater Flexibility

Leaf Capture's Live View shows you a real-time color video-like image, with dual monitor support. Its fast refresh rate lets you see the live color image quickly, so you can correct focus or adjust depth of field, composition, and layout before you take a shot. The Leaf Aptus-II digital camera back has built-in active cooling, so there are no time limitations and Live View can be left running as long as you need.

Save Production Time

Another true time-saver is Leaf Capture's grid and layout overlay functionality. Digital files received from art directors are easily imported into the application and displayed on the monitor. Once you've edited your shots you can start processing the images. Since the selected image processes run in the background, you can open and work on other images, or continue your shooting session without affecting the image processing. Take advantage of your Mac workstation's full capabilities, with multiple monitor support. Your assistant can even review your images on-site on another monitor, while you continue to shoot.





Compare On the Shoot

Use Compare View to evaluate any number of original RAW images and find the best shot in a series of images by comparing them to one another in-sync. It optimizes your work area by intelligently arranging images and correcting their orientation. Quickly and easily compare multiple images to choose the perfect shot.

Camera Control

New extended camera controls provide full integration by synchronizing between Leaf Capture 11 and the Leaf AFi-II camera controls, including: exposure mode, metering mode, aperture, shutter, exposure compensation, flash sync mode, mirror control, etc.

Reproduce Colors More Accurately

The Color Temperature and Tint sliders allow you to more accurately compensate for varying lighting conditions. For example, when shooting on location or without a gray card, use the Temperature Slider to balance your image color.

Adjustable Histogram

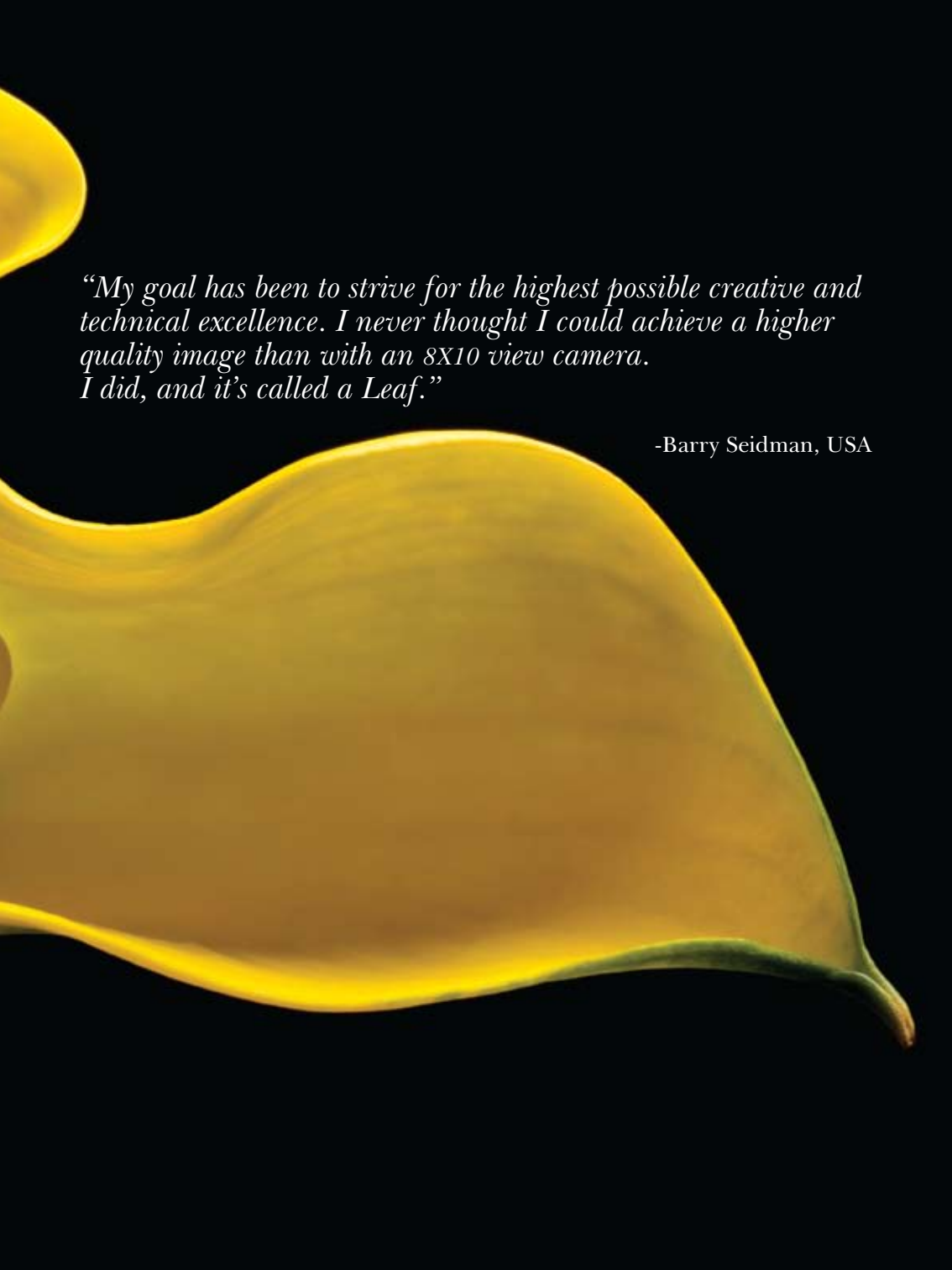
The adjustable histogram features the dynamic range a photographer needs, from 11 f-stops under to 3 f-stops over. Since the back has more dynamic range than a standard offset press can handle, by marking the dynamic range in the histogram you can adjust the ratios so that they fall in the dynamic range of the press and you can still have more shadow detail for digital work or your own prints.

Clean Up and Remove Moiré

Leaf Capture allows you to quickly and easily perfect your images directly on the shoot. The Moiré Removal Tool is easy to use, removing moiré directly in the RAW files. Manual masking ensures that you control exactly where the Moiré Removal Tool works, by selecting locations for moiré suppression. Leaf Capture ensures moiré removal without blurring or loss of detail, keeping the image's original sharpness.

Photo by Barry Seidman



A large, vibrant yellow leaf with a green stem, set against a black background. The leaf is the central focus, with its bright yellow color contrasting sharply with the dark background. The stem is a deep green and curves slightly to the right. The leaf's shape is broad and slightly curved, with a smooth, wavy edge. The lighting is soft, highlighting the texture of the leaf's surface.

“My goal has been to strive for the highest possible creative and technical excellence. I never thought I could achieve a higher quality image than with an 8X10 view camera. I did, and it’s called a Leaf.”

-Barry Seidman, USA

Our Science

Leaf uses ultra-low-noise sensors with a high dynamic range to better capture what the human eye sees. The Leaf imaging modules utilize thin-layer sensor technology with fewer components above the pixels. This enables photons to be absorbed close to the photo-sensitive surface, which is especially important with wide angle lenses. Leaf sensors also have a low base ISO, contributing to clean images with more uniform results, natural colors, and reduced color cast.



The Science of Leaf

The Leaf development team includes PhDs in particle physics, condensed matter physics, electrical engineering, applied physics and electro-optics. Every Leaf module is the result of years of research and innovation by these dedicated scientists and engineers who work to advance the science of imaging. Leaf scientists also contribute to the digital photography working groups of the ISO TC42 Technical Committee that sets global standards for photography.

Rugged, durable materials and design

Leaf products are manufactured for professional use. The Leaf AFi-II has a lightweight metal chassis and an ergonomic handgrip. The Leaf AFi-II was designed from scratch as a professional digital camera, with built-in upgradeability that allows you to take advantage of new technologies as they advance. The imaging module is constructed from rugged aircraft-grade aluminum. The soft covering provides a solid grip and long-lasting comfort in any challenging environment.

Precision German Lenses

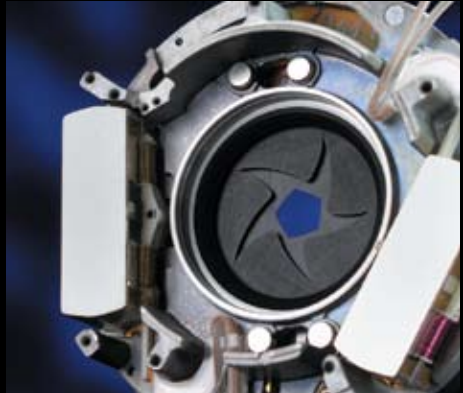
PQ and PQS autofocus lenses by Schneider are precision-manufactured for optimum sharpness, color balance, brilliance and speed with color-accurate, flare-reducing HFT coatings. They employ Direct Drive technology with microcomputer-controlled, motor-driven diaphragm and shutter for accurate performance. All lenses are fully synchronized over their entire shutter-speed range.

Fast, accurate leaf central shutter

Made from hand-stamped carbon fiber produced for the aerospace industry, the ultra-thin, frictionless shutter blades in the PQS lenses work on an air cushion for precise, accurate performance and high-speed flash sync up to 1/1000 sec. The central leaf shutter and diaphragm are microcomputer-controlled and are driven by two linear motors for maximum precision in 1/3-stop increments.

Auto-focus mechanism

The Leaf AFi-II autofocus technology is the most advanced available in medium-format cameras. Multiple autofocus options ensure crisp images in all shooting situations. With Focus Bracketing, the Leaf AFi-II adjusts the plane of focus automatically from exposure to exposure. By using the Focus Trap with the Leaf AFi-II, the camera will take a shot only when the subject enters your preset focus range.



“We used the Leaf AFi camera recently on the new worldwide SONY / James Bond campaign where we put the camera through its paces capturing Daniel Craig and many special effects components, performing beyond our expectations, allowing us to capture in a way not possible before.”

- Warren Du Preez and Nick Thornton Jones, United Kingdom

Leaf

A Pioneer in Professional Digital Photography

Leaf is a pioneer in the field of professional digital photography. In 1992, we introduced the world to the first commercial digital camera back. The revolutionary Leaf DCB (Digital Camera Back) offered a resolution of 4 million pixels (MP) in a 2048x2048 pixel format. Today, Leaf AFi-II cameras and Leaf Aptus-II digital backs are industry leaders.

Once again, Leaf sets new standards in professional digital photography, providing photographers with the ease-of-use and technologies to capture images with incredible detail and impressive dynamic range. The 56x36mm, 56 megapixel internally rotating sensor in the Leaf AFi-II imaging module accompanies a host of advanced features designed to satisfy the needs of the most demanding professionals. Our ceaseless efforts to improve the quality of our products, technologies and service underlie the Leaf dedication to the advancement of professional digital photographers.

Technological leadership and a creative spirit have always been our signature as we continue to introduce more powerful easy-to-use, more innovative medium-format digital solutions.

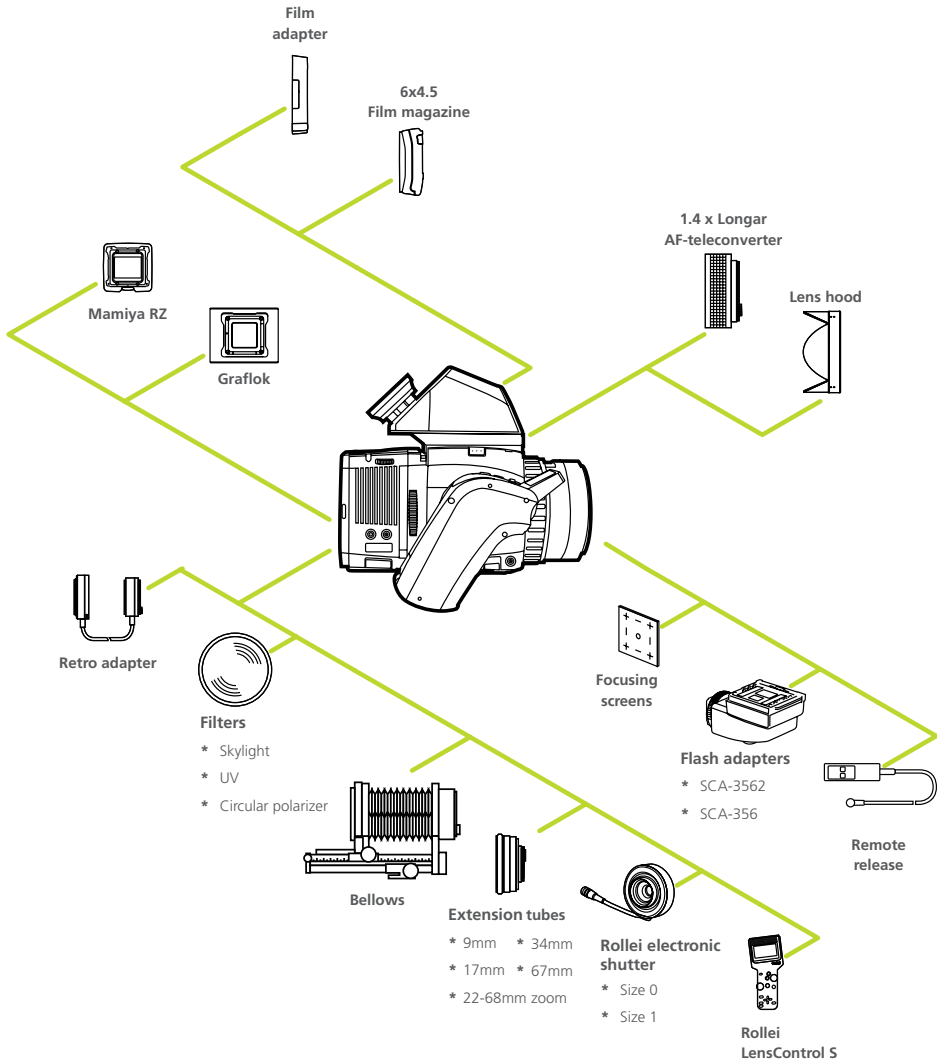
At Leaf, we understand that it's you – the photographer – not the camera, who is at the center of the shoot. We provide the technologies so that, together, we can both realize your vision.

Leaf – our science, your art.





Leaf AFi-II Accessory Connectivity



Connects to over 80 different camera models

For a complete list, visit www.leaf-photography.com/compatible_cameras

Compatible with over 45 different lenses

For a complete list, visit www.leaf-photography.com/compatible_lenses

Specifications

| Leaf AFi-II | | 10 | 7 | 6 |
|--|--------------------------|---|----------------|----------------|
| CCD Size | mm | 56 x 36 | 48 x 36 | 44 x 33 |
| | pixels | 9288 x 6000 | 6726 x 5040 | 6144 x 4622 |
| | resolution | 56 MP | 33 MP | 28 MP |
| Capture Rate (sec/frame) | | 1 | 1.1 | 1 |
| File Size | MOS | 112 MB | 67 MB | 53 MB |
| | MOS lossless compression | 78 MB | 47 MB | 31 MB |
| | TIFF 16-bit | 345 MB | 190 MB | 159 MB |
| | 8 bit RGB | 172 MB | 102 MB | 80 MB |
| | 8 bit CMYK | 229 MB | 136 MB | 106 MB |
| ISO Sensitivity | | 100-800 | 50-800 | 50-800 |
| View camera compatible | | Yes | Yes | Yes |
| Leaf Verto sensor rotate | | Yes | Yes | No |
| Tilt touch screen | | Yes | Yes | No |
| Leaf SensorFlex | | Yes | No | No |
| Camera Body Dimensions | | 157 x 112 x 78 | 157 x 112 x 78 | 157 x 112 x 78 |
| System Weight Includes battery, 80mm lens, waist-level viewfinder and digital imaging module. | | 2180 g | 2180 g | 1970 g |
| Color depth | | 16 bits (65,536 levels per channel) | | |
| Dynamic range | | 12 f-stops | | |
| Camera control | | Full remote control from computer in tethered mode | | |
| Shutter | | Leaf central shutter powered by linear motors (direct drive) | | |
| Connectivity | | FireWire 400, FireWire 800 | | |
| LCD on imaging module | | 6 x 7 cm (3.5") touch screen works in portable and tethered modes for indoor and outdoor shooting | | |
| Capture delay | | Shoot with a delay of 1, 1.5, 2, 2.5, 3, 3.5, 4, 5, 6, 8, 10, or 15 seconds between shots | | |
| Operating conditions | | 0°-40°C (32°-104°F), 15-80% humidity (non condensing) | | |

For complete specifications, visit www.leaf-photography.com/aptus2/specs

| Leaf Aptus-II | | 10 | 7 | 6 |
|----------------------------------|--------------------------|--|-------------|-------------|
| CCD Size | mm | 56 x 36 | 48 x 36 | 44 x 33 |
| | pixels | 9288 x 6000 | 6726 x 5040 | 6144 x 4622 |
| | resolution | 56 MP | 33 MP | 28 MP |
| Capture Rate (sec/frame) | | 1 | 1.1 | 1 |
| File Size | MOS | 115 MB | 67 MB | 53 MB |
| | MOS lossless compression | 78 MB | 47 MB | 31 MB |
| | TIFF 16-bit | 345 MB | 204 MB | 159 MB |
| | 8 bit RGB | 172 MB | 102 MB | 80 MB |
| | 8 bit CMYK | 229 MB | 136 MB | 106 MB |
| ISO Sensitivity | | 100-800 | 50-800 | 50-800 |
| Color depth | | 16 bits (65,536 levels per channel) | | |
| Dynamic range | | 12 f-stops | | |
| Color management workflow | | Range of 12 profiles including factory profiles, plus optional ability for users to create their own custom camera profiles | | |
| Leaf RAW file format | | A standard, open RAW format compatible with many leading applications | | |
| Properties | | Dimensions: W 95 x H 82 x D 59 mm, Weight: 600 g (1.3lb) | | |
| Operating conditions | | Back: 0°–40°C (32°–104°F), Digital Magazine: 5°–50°C (41°–122°F), Humidity: 15%–80% RH (non-condensing) | | |
| Conformed Standards | | CE, FCC, CSA , RoHS | | |
| LCD operation | | Advanced, bright, high-contrast touch screen interface for indoor or outdoor work | | |
| File management | | Preshoot file naming, image flagging, full browsing, creation of job folders, custom file annotations | | |
| Image viewing | | Preview up to 20 images on one LCD screen, true 1:1 zoom | | |
| Image measuring tools | | Histogram, exposure alarms, average exposure meter, spot meter (f-stop) | | |
| Portable storage options | | CF card type I and II, Leaf Digital Magazine, high volume portable FireWire disks Tested CF cards for SanDisk Extreme series (recommended) including Extreme IV, SanDisk Ultra II, Lexar CF Pro series, Ridata Supreme Series and Transcend 300X | | |
| Portable power | | Leaf battery 2350mAh power Samsung SBL-160, 1850 mAh power (single-size battery) Samsung SBL-320, 3200 mAh power (dual size battery) | | |

For complete specifications, visit www.leaf-photography.com/aptus2/specs

Photo by Montalbetti+Campbell





About Leaf: Our Science Your Art

Since introducing the world's first digital camera back (DCB) in 1992, Leaf has been recognized as a worldwide leader in the professional photography market. With extensive knowledge of image processing, color management and file conversion technology, Leaf has become the preferred professional digital camera vendor for the world's leading photographers.

For more information visit www.leaf-photography.com

Kodak IL, Ltd.
7 Ha Tnufa St.
Petach Tikva 49130
Israel
leafsales@kodak.com
Tel. 972-3-916-7393
Fax. 972-3-928-6100

Leaf America
8 Westchester Plaza
Elmsford, NY 10523
USA
Tel. 866-4US-LEAF
Fax. 866-487-4473

Leaf Europe
62 Rue Général de Gaulle
La Hulpe 1310
Belgium
Tel. 32-2-352-2769
Fax. 32-2-352-2817

Leaf Asia Pacific
Rm 1009, 10/F,
Eight Commercial Tower
8 Sun Yip Street
Siu Sai Wan
Hong Kong
Tel: 852-2896-7088
Fax: 852-2898-1628

Kodak Japan Inc.
Kenkyusha Bldg.
2-9 Kanda Surugadai
Chiyoda-ku Tokyo, 101-0062
Japan
Tel 81-3-5259-9300
Fax 81-3-5259-9325

©2008 Kodak. All rights reserved. Data subject to change without notice. Leaf and the Leaf logo are trademarks of Kodak. The Leaf products mentioned in this document are trademarks or service marks of Kodak. Other companies and brands, products and service names are for identification purposes only and are trademarks or registered trademarks of their respective holders. Catalog number: 650-00922A-EN